

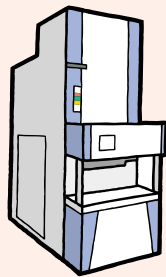
TEL's Products

With its semiconductor production equipment, TEL provides a foundation for the digital network era.

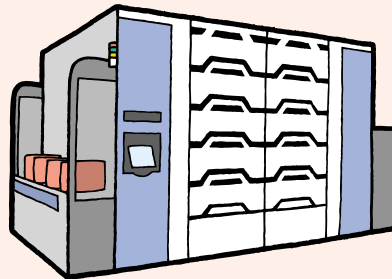
TEL Semiconductor Technology is All around Us

Many processes are required to produce semiconductors on thin silicon wafers. In the digital network era, finished semiconductors are used not only in personal computers and home electronics but in cars and many other common conveniences. Semiconductors are found in virtually every appliance now and used in every facet of our lives. In its role of developing and building the most advanced semiconductor production equipment, TEL is part of the basic support system for the modern society.

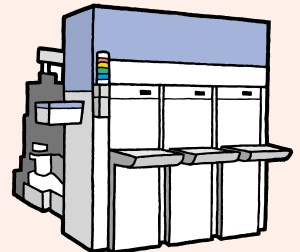
TEL Offers Semiconductor Production Equipment TEL's Major Products



Thermal Processing Systems



Coater/Developers

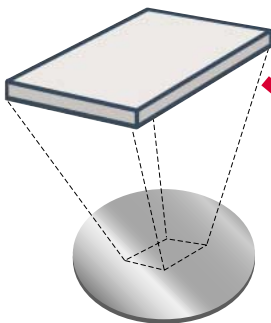


Plasma Etch Systems

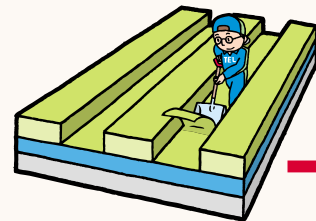
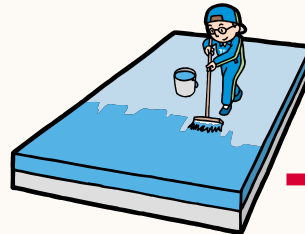
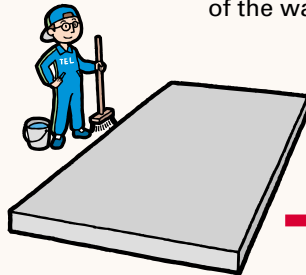


TEL's Equipment is Used for Producing Semiconductors Semiconductor Production Processes

Layers are added to and then removed from the surface of the wafer, over and over again.



Silicon wafer



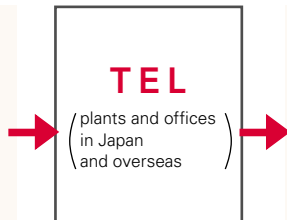
Flow of Materials in TEL

TEL needs a great variety of the earth's resources to do its business. At the right is a figure showing how these materials flow through TEL's manufacturing plants and office facilities. The environmental burden is especially heavy during process assessment. This is because assessing the correct functioning of the equipment requires much electric power and various gases and chemicals. During process assessment, the equipment is observed while it performs the very same processes for which it will be used by the customer.

Input

FY 2005, relative to FY 2004

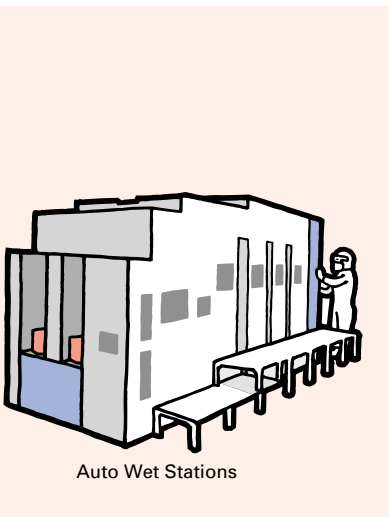
● Electric power	247,100 MWh	(+6.0%)
● Gases	794 km ³	(+11.0%)
● Fuel	2,780 kl	(-3.8%)
● Water	1,004 km ³	(-1.0%)
● Chemical substances (Class 1 materials under PRTR law)	11.3 t	(-22.1%)
● Paper (copy paper)	377 t	(+7.4%)



Output

FY 2005, relative to FY 2004

● Total output of products	21,841 t	
● CO ₂	104,110 t	(+5.3%)
● NO _x	11.4 t	(+2.7%)
● Wastewater	994 km ³	(-1.0%)
● Total wastes	11,029 t	(-9.7%)
● Total recycled resources	10,597 t	(-6.7%)
● Total amount incinerated and sent to landfills	431 t	(-49.1%)



Semiconductors Made by TEL's Equipment are Used Almost Everywhere

Products Using Semiconductors

